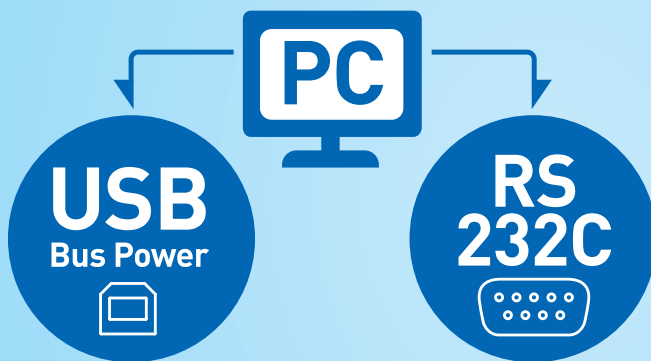


2-Way Connection



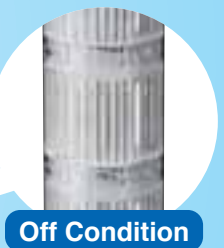
Serial
↓
Relay

Interface Converter
PHC-D08

USB Bus Power RS 232C DC24V Power Supply Output

CE RoHS C UL US

*Only N type is UL and CE certified.



Serial
↓
Signal Tower

Interface Converter
PHE-3FB3

USB Bus Power RS 232C Signal Tower Φ40 Alarm 4 Sounds Output 80dB Flashing Pattern 2

CE RoHS UL CERTIFIED Non N type C UL US N type N type



Light & Sound

File download

You can download the following from our homepage.

User's Manual

USB Driver Installation Manual

USB Driver

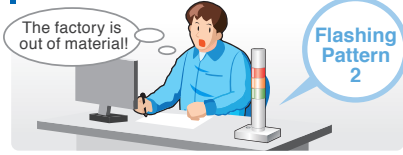
* For this product, a software program which creates the data output from the USB/RS-232C port of a personal computer is required from the user.

Easy to control from a personal computer.
Information is given intelligibly with light and sound.

USB Connections **PHE** **PHC**

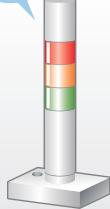


Sound can also be transmitted. **PHE**

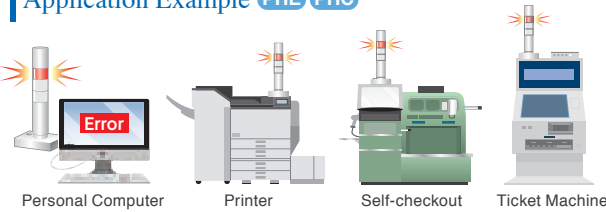


Various Alarm Sounds **PHE**

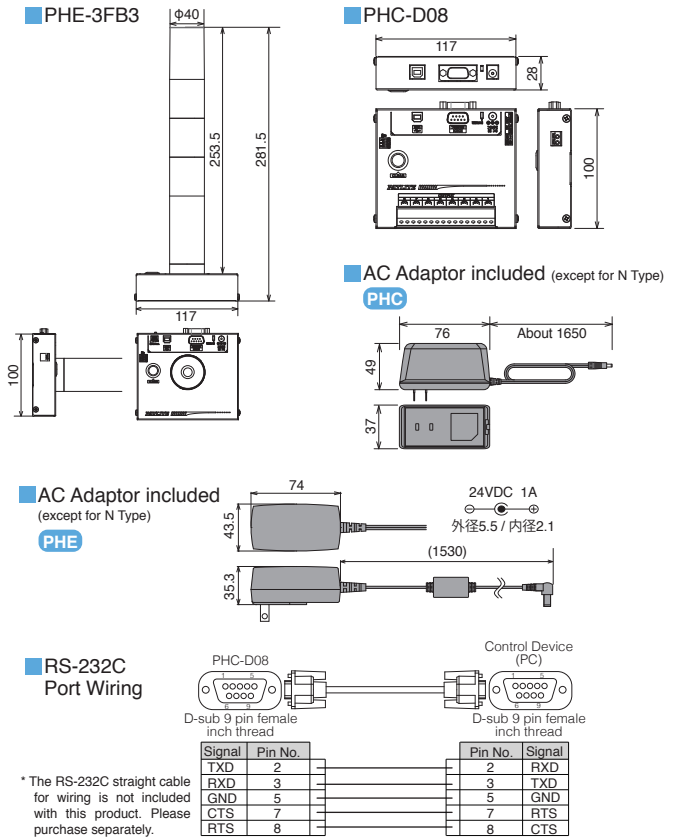
Easily adjustable slide-switch volume.
Four internal alarm sounds



Application Example **PHE** **PHC**



Dimensions (Unit: mm)



Communication Specifications

* Be sure to download and read the detailed operation manual which can be found at our homepage.

Communication Data Format

	Header	ID	Command	Data		End Code
				PHE	PHC	
Send Data	ASCII Code (HEX Code)	@ [40H]	?? [3FH 3FH]	Refer to the command list	By command	[21H]
Byte Count	1Byte	2Byte	1Byte	0~6 Byte	0~8 Byte	1Byte

Command List

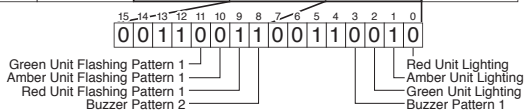
Command	Number of Data Bytes		Function	
	PHE	PHC	PHE	PHC
1 [31H]	2Byte		Turns on specified Signal Tower light and sound buzzer.	Turn ON Specified Output Terminal Block
0 [30H]	2Byte		Turns off specified Signal Tower light and stop buzzer.	Turn OFF Specified Output Terminal Block
? [3FH]	2Byte		Set ID for this product.	
S [53H]	6Byte	8Byte	Control Signal Tower and buzzer operation.	Control Specified Output Terminal Block
G [47H]	0Byte		Acquire Signal Tower and buzzer conditions.	Obtain Output Terminal Block condition
C [43H]	0Byte		Turn off Signal Tower light and stop buzzer.	Turn all Output Terminal Block OFF
M [4DH]	0Byte		Obtain information on this product.	

- For PHE
 - A "1" and "0" Command has compatibility with the PC Controlled Signal Tower PHE-3FBE1.
 - Command "S" can be used to control flashing pattern 2 of the Signal Tower and buzzer patterns 3 and 4.
 - The communication protocol can also be used with the Model PHU-3.
- For PHC
 - A "1" and "0" Command has compatibility with the PC Output Relay Unit, PHC-100A.
 - Command "S" can simultaneously control an output terminal to turn "ON" or "OFF."

Transmission Example

In this example, the Signal Tower red shall flash pattern 1, amber will light up, and buzzer pattern 2 shall sound.

Send Data						
Header	ID	Command	Data	End code		
@ [40H]	? [3FH]	? [3FH]	[31H]	[33H]	[32H]	[21H]
			001100110011001100110011001100			



How to Order

PHE-3FB3 - RYG **PHC-D08**

AC Adaptor AC Adaptor

Blank: AC Adaptor included Blank: AC Adaptor included
N: AC Adaptor not included N: AC Adaptor not included

Specifications

Model	PHE-3FB3 PHE-3FB3N(AC Adaptor not included)	PHC-D08 PHC-D08N(AC Adaptor not included)
Rated Voltage	Main Unit 24VDC (Main Unit) 5VDC (USB Bus Power) AC Adaptor Input: 100VAC - 240VAC (50/60Hz) Output: 24VDC	90VAC - 264VAC (AC Adaptor)
Operating Voltage Range	Standby 1.2W (100VAC) 0.4W (100VAC) Maximum 4.4W (100VAC) 16W (100VAC)	
Rated Power Consumption	0°C to +40°C	
Operating Ambient Temperature	20% to 85% RH (No Dew or Condensation)	
Operating Ambient Humidity	Indoor, Upright	
Mounting Location and Direction	IP20	
Protection Rating	545g (±10%) 370g (±10%)	
Mass	USB Port USB 2.0 Conformity (Bus-powered) Standard Type B (Female)	Serial Port RS-232C Conformity D-Sub 9 pin (Male)
Interface	Luminous Intensity *1 Red, Amber, Green Clear Lens	Sound Pressure Level 80dB or more (1m from the buzzer)
Luminous Intensity *1	Number of Contacts — 8	External Contact Output Contact Specifications — Non-Voltage Contact (Normally Open Contact)
Sound Pressure Level	Rated Voltage and Current — 30VDC/3A	The power supply output terminal *2 Rated Power Output — 24VDC/500mA or less
Number of Contacts	Accessories AC Adaptor (except for N Type), Installation Manual, Rubber Feet	Sound Reduction sheet ○
Contact Specifications	Supported OS *3 Windows 7(32/64bit), Windows 8(32/64bit), Windows 8.1(32/64bit), Windows 10 (32/64bit), Windows Server 2008 R2, Windows Server 2012, Windows Server 2012 R2	

*1 The Signal Tower may be dark when being operated by USB bus power. *2 The power supply output terminal cannot be used without an AC Adaptor connected. Be sure to connect an AC Adaptor when using the power supply output terminal. *3 "Windows", and the Microsoft Corporation are registered trademarks of the Microsoft Corporation of America and other countries.

PATLITE MEXICO S.A. de C.V.

E-mail: info@patlite.com.mx; TEL:+52-442-688-3496
www.patlite.com.mx

PATLITE Corporation
www.patlite.co.jp

PATLITE (U.S.A.) Corporation
www.patlite.com

PATLITE (SINGAPORE) PTE LTD
www.patlite-ap.com

PATLITE (CHINA) Corporation
www.patlite.cn

PATLITE (THAILAND) CO., LTD.
www.patlite.co.th

PATLITE Europe GmbH
www.patlite.eu

PATLITE KOREA CO., LTD.
www.patlite.co.kr

PATLITE TAIWAN CO., LTD.
www.patlite.tw



To ensure correct use of these products, read the "Instruction Manual" prior to use. Failure to follow all safeguards can result in fire, electric shock, or other accidents. Specifications are subject to change without notice.