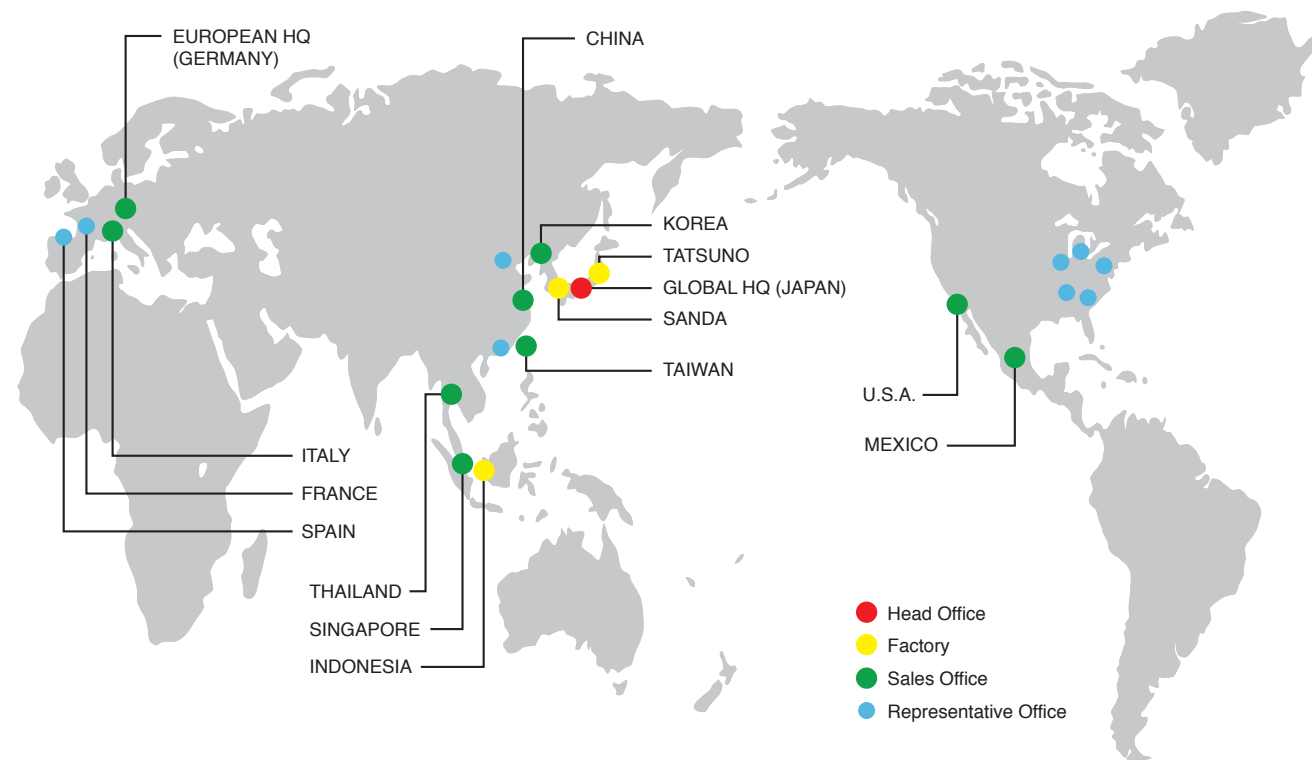


Specifications

Model	Wireless Data Acquisition System WD PRO Receiver WDR-LE-Z2-PRO	Wireless Data Acquisition System WD PRO Receiver <Lite version> WDR-LE-Z2-PRO-L
Power Supply Input	24V DC / USB / PoE	
Mounting Method	Horizontal / Wall / Ceiling	
Network Communication Method	10BASE-T-twisted pair ethernet / 100BASE-TX- CAT5 cable / 1000BASE-T- also CAT5	
Number of Transmitters	Maximum 30 units	
Communication Range	Line of sight, Approximately 30m * 1	
IP Address Setting	Manual setup / DHCP auto configuration	
Operating Ambient Temperature	-10°C~+50°C (AC Adaptor accessory : 0°C~+40°C)	
Protection Rating	IP20	
Wireless Connection Diagnostics	Real-time diagnosis / Long-period diagnosis (1~72 hours)	
Transmitter Wireless Settings	Built-in setup browser / WDS-WIN01 software	Use WDS-WIN01
Host System Communication	<ul style="list-style-type: none"> • CSV file *Use WDS-WIN01 • SOCKET communication (WDR protocol) • SOCKET communication (WDR-PRO protocol) • Database linkage (MySQL) • Modbus/TCP communication 	<ul style="list-style-type: none"> • CSV file *Use WDS-WIN01 • SOCKET communication (WDR protocol)
Andon Display	○	×

* 1 Due to the characteristics of radio waves, this value is for reference only.

PATLITE Global Network



PATLITE MEXICO S.A. de C.V.
E-mail: info@patlite.com.mx; TEL: +52 - 442 - 688-3496
www.patlite.com.mx

PATLITE Corporation
www.patlite.co.jp

PATLITE (U.S.A.) Corporation
www.patlite.com

PATLITE (SINGAPORE) PTE LTD
www.patlite-ap.com

PATLITE (CHINA) Corporation
www.patlite.cn

PATLITE Europe GmbH
www.patlite.eu

PATLITE KOREA CO., LTD.
www.patlite.co.kr

PATLITE TAIWAN CO., LTD.
www.patlite.tw

PATLITE (THAILAND) CO., LTD.
www.patlite.co.th

CAUTION

To ensure correct use of these products, read the "Instruction Manual" prior to use. Failure to follow all safeguards can result in fire, electric shock, or other accidents. Specifications are subject to change without notice.

O-BJ07A EN 2102

PATLITE®

Wireless Data Acquisition System
WD-Z2 Series / WD PRO Series

More Accessible Ways to Obtain Equipment Statuses

Monitor in real-time and connect with database



• Collaboration Functions Including Modbus/TCP and MySQL Database

• Real-time Equipment Status Collection

• Real-time Status Display on Andon Screen

• Cloud Service Support for MindSphere

• Quality of Wireless Connection Diagnostics

• PoE Capability

Powered by MindSphere

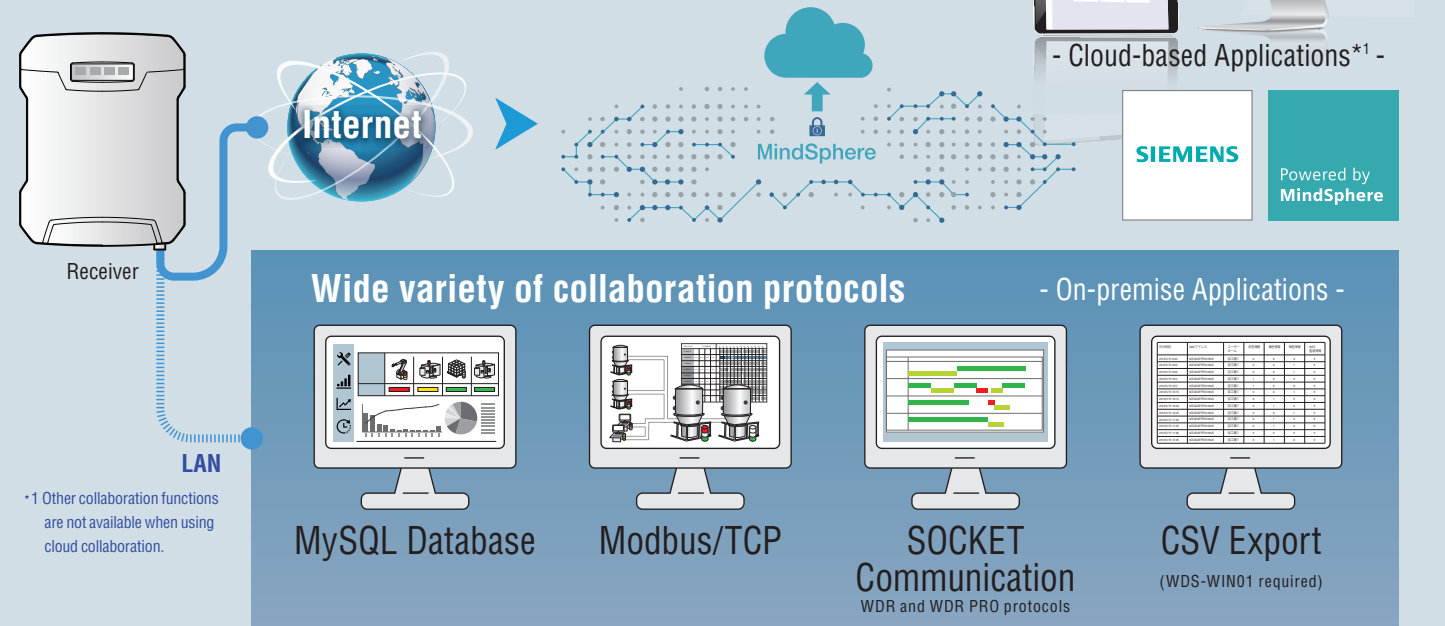
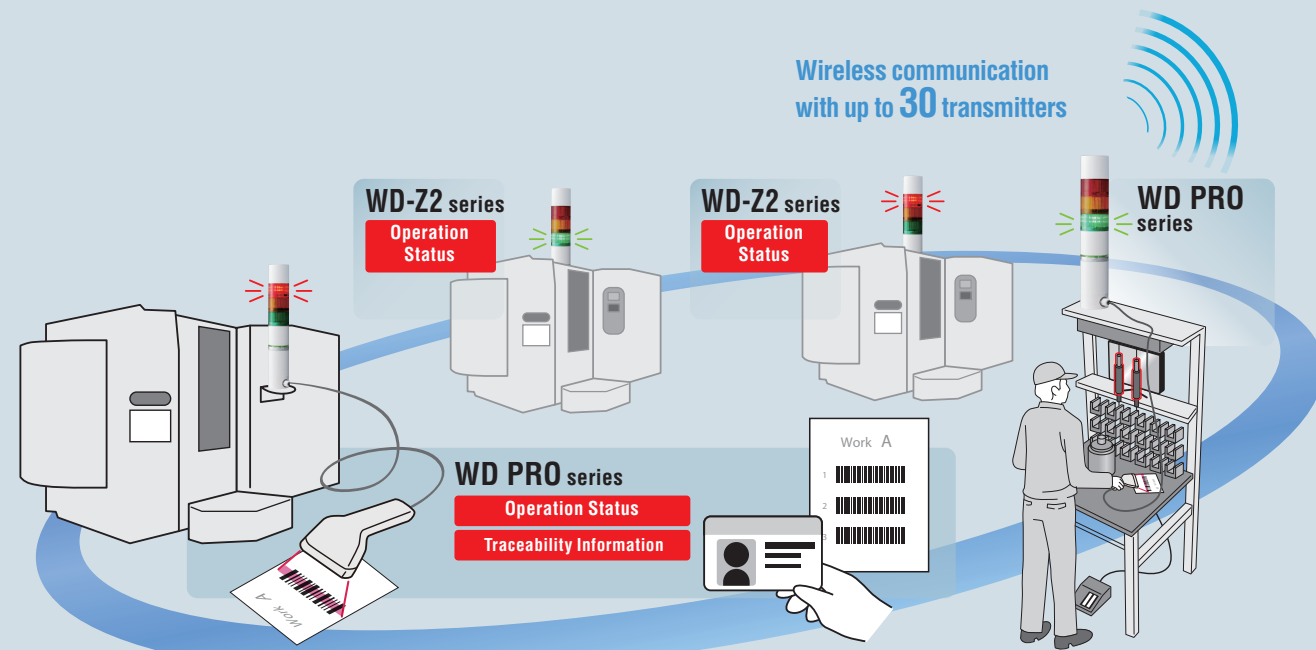
www.patlite.com.mx

● PATLITE, the PATLITE logo are either registered trademarks or trademarks of PATLITE Corporation in JAPAN and/or other countries.
● The names of other companies and products are trademarks or registered trademarks of their respective companies.
● MySQL is a registered trademark of Oracle Corporation and its subsidiaries and affiliates in the United States and other countries.

www.patlite.com.mx

MAKE SMARTER, QUICKER DECISIONS WITH REAL-TIME DATA

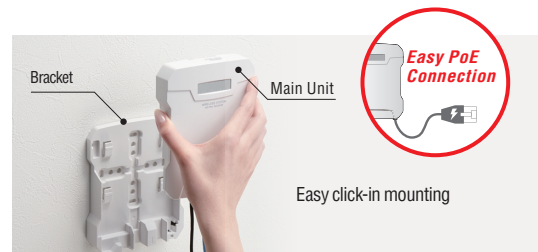
Run multiple applications simultaneously



WD PRO series

PoE Capability

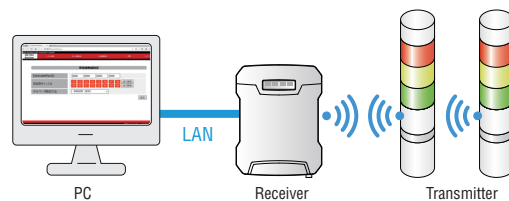
The WD PRO Receiver can access both power and data through a single Ethernet cable so that wiring space and costs can be minimized.



Device Setup Browser

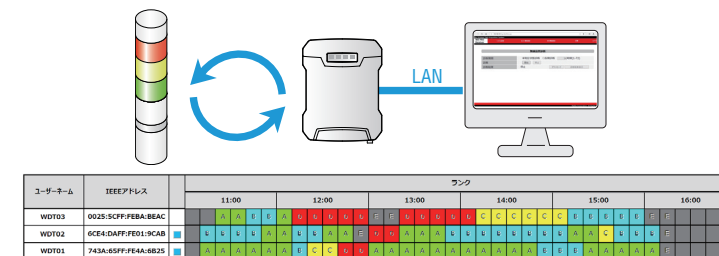
Connect the WD PRO Receiver to a PC via LAN cable to access the setup browser where various settings of the receiver and transmitter can be configured.

* Not compatible with Lite series or when connected via USB.



Wireless Connectivity Diagnostics

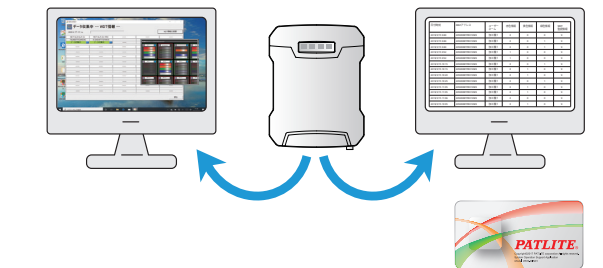
Displays the quality of wireless connection between the receiver and transmitter(s) using a 5-level evaluation system. Up to 72 hours of diagnosis data can be recorded so users can determine when and where the installation environment needs to be modified.



* Diagnostics occur every 10 minutes during long-period sessions.
* During diagnostics, a large amount of data is processed which may affect the data acquisition function.

Andon Display

Real-time light and buzzer statuses of all connected signal towers can be displayed onto your computer screen. *1 This can be done simultaneously with the CSV data collection. *2



*1 This function is not available for Lite models (WDR-LE-Z2-PRO-L).
*2 WDS-WIN01 license purchase required for CSV file export.

WD PRO Receivers



Compatible in
40
countries
(as of April 2020)

Connect up to 30 transmitters

LAN or USB connection

WDR-LE-Z2-PRO

WDR-LE-Z2-PRO-L
<Lite version>

Compatible Transmitters

Wireless Data Acquisition System

WD PRO series



WDT-6LR-Z2-PRO

WD PRO Transmitter
Compatible with
WD PRO series
Base Unit

Maximum distance of
wireless transmission:
30m *



WDB-D80S-PRO

WD PRO Contact Input - Serial
Communication Base Unit

RS232C
8
contact
inputs

WDT-6LR-Z2-PRO

WDB-D80S-PRO

Compatible Transmitters

Wireless Data Acquisition System

WD-Z2 series



WDT-4LR-Z2

WD-Z2 Transmitter Unit
Compatible with
LR4 series
Signal Towers

Maximum distance of
wireless transmission:
30m *



WDT-5LR-Z2

WD-Z2 Transmitter Unit
Compatible with
LR5 series
Signal Towers

Maximum distance of
wireless transmission:
30m *



WDT-6LR-Z2

WD-Z2 Transmitter Unit
Compatible with
LR6 series
Signal Towers

Maximum distance of
wireless transmission:
30m *



WDT-6LR-Z2

WD System Setup Software



WD System Setup Software

WDS-WIN01 Ver. 1.04 or later

* Some contents of the software requires a paid license.

* Due to the characteristics of radio waves, this value is for reference only.