

## Specifications

Product Name	USB Controlled Multicolor Signal Beacon			
Model	NE-SN-USB	NE-ST-USB	NE-WN-USB	NE-WT-USB
Rated voltage	5V DC (USB bus power)			
Operating Voltage Range	Rated voltage $\pm 5\%$ (conforms to USB 2.0 standard)			
Rated Current Consumption	205mA	215mA	170mA	180mA
Operating Ambient Temperature	-20°C to +50°C		-25°C to +60°C	
Operating Ambient Humidity	90% RH or less, non-condensing			
Mounting Location	Indoor			
Mounting Direction	All directions	All directions (Upright only when waterproofing is required)		
Protection Rating	IP20	IP65		
Environmental Condition	All Directions	Upright (IP20 except for upright)		
LED control	Light on, pattern on (6 types)			
Luminous Color	Red, Green, Blue, Amber, Cyan, Purple, White			
Buzzer Operation	Sound on, sound pattern (7 types)			
Sound Pressure Level	Typ. 65dB		Typ. 85dB	
Volume change Levels	10 levels (None ... Max)			
Software library (DLL)	Windows®10 20H2 and higher (32bit/64bit)			
Supported OS				

Product Name	USB Signal Tower	
Model	LR6-3USB□-RYG	LR6-USB□
Rated Voltage	5V DC (USB bus power)	
Operating Voltage Range	Rated voltage $\pm 5\%$ *Compliant with USB2.0 standard	
Rated Current Consumption	500mA (max)	
Ambient Operating Temperature	-20°C to +50°C	
Ambient Operating Humidity	90% RH or less, no condensation	
Mounting location / direction	Indoor / Upright	
Protection Rating	IP65 (IEC 60529), NEMA TYPE 4X, 13 * Except when using pole bracket or wall bracket.	
Mass(Tolerance:±10%)	320g	140g
LED unit control	Light on, pattern on (4 types)	
Buzzer	Operation: Sound on, sound pattern (4 types)	
	Frequency: 13 types	
	Sound pressure: Typ.80dB (1m from the front of the buzzer aperture / at 2349.3 Hz), Sound reduction (Buzzer switch: Low): approximately -10dB	
Communication method	USB2.0 Full Speed	
Software library (DLL)	Windows®7, Windows®8 (excluding Windows®8 RT), Windows®8.1 (excluding Windows®8.1RT), Windows®10	
Supported OS		

## Model Number Configuration

### NE-□-USB

Specifications

S : Stationary /Magnet mounting  
1/4 inch Screw mounting  
W : 2-point hole screw mounting

Touch Sensor

T:With Touch Sensor  
N:No Touch Sensor

### LR6-□-USB□-RYG

Signal Tower Tiers

Blank : Base Unit  
3 : 3 Tiers\*

Body Color

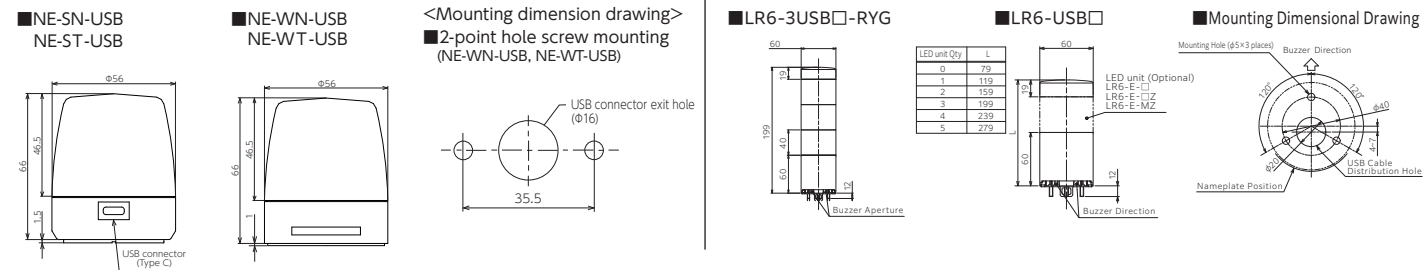
W : Off-white  
K : Black

LED Unit Color

Blank : Body Unit  
RYG : Red, Amber, Green  
(From top to bottom)

\*Pre-assembled model is not available in North America.

## External View (mm)



## PATLITE Corporation

PATLITE (U.S.A.) Corporation

PATLITE KOREA CO., LTD.

PATLITE MEXICO S.A. de C.V.

PATLITE TAIWAN CO., LTD.

PATLITE Europe GmbH

PATLITE (THAILAND) CO., LTD.

PATLITE UK LTD

PATLITE (SINGAPORE) PTE LTD

PATLITE (CHINA) Corporation

PT. PATLITE INDONESIA

www.patlite.com

●PATLITE, the PATLITE logo are either registered trademarks or trademarks of PATLITE Corporation in JAPAN and/or other countries.

### CAUTION

To ensure correct use of these products, read the "Instruction Manual" prior to use. Failure to follow all safeguards can result in fire, electric shock, or other accidents. Specifications are subject to change without notice.

D-BC05A EN 2308 A

# PATLITE®

# USB-Controlled Products Catalog



www.patlite.com

# One USB cable for both control and power supply.

Touch Operation for Easy Control. Ideal for Office Use with Gentle Lighting.

USB-controlled Multi-color Signal Beacon

## NE-USB series



- Φ56 mm
- 85dB  
\*SN, ST 65dB
- IP65  
\*SN, ST IP20
- Multi-color LED (7 colors)
- USB Type-C
- USB bus power
- Touch Sensor  
\*ST, WT

### Easy Control with Software Library

- Easy control by using the software library downloaded from our website. (Control can also be made according to protocol specifications for operating systems other than the supported ones.)
- Demo apps and sample codes can be downloaded from our website.

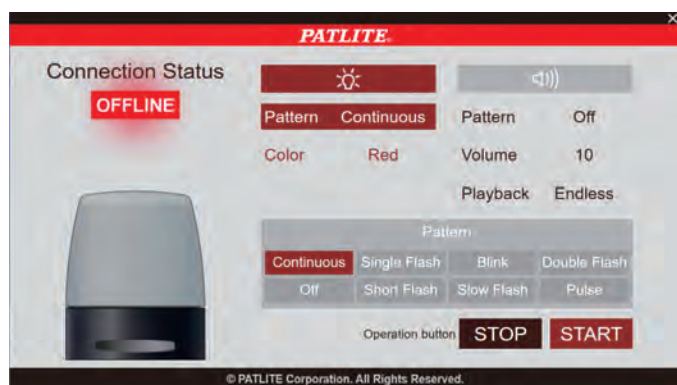
### Dedicated Driver not Required

- Control is possible without the need to install dedicated drivers as it is an HID class device.

### Various Mounting Methods



### Demo app



Excellent visibility with various mounting options in a stackable design.

USB Signal Tower

## LR6-USB series



- Φ60 mm
- 80dB
- IP65
- Multi-color LED (7 colors)
- USB Type-B
- USB bus power

### Uses a software library

- The use of a software library (downloadable from our website), makes controlling it simple.
- Download a demo application and sample code from our website.

### No need for exclusive driver installations

- Installing an exclusive driver is unnecessary as it is supported in the HID device class.

### Also supports wall mounting, pole mounting



### Supported LED Unit



- The maximum number of LED unit attachments for LR6-E-□ and LR6-E-□Z, is five in total.
- No units other than the supported LED units are compatible.
- Two or more LED units of the same color for LR6-E-□ and LR6-E-□Z are not connectable.
- No other units are connectable for the LR6-E-MZ.
- The LR6-E-MZ offers two flashing patterns and the option for continuous lighting.

\* For details of optional items etc., visit our website [www.PATLITE.com](http://www.PATLITE.com)

## Best for offices and stores.



Linked with software notifications



Kiosk terminal



Self checkout machine

## Best fit for the FA industry



Status display of PC-controlled devices such as printers and inspection machines.



Clear input