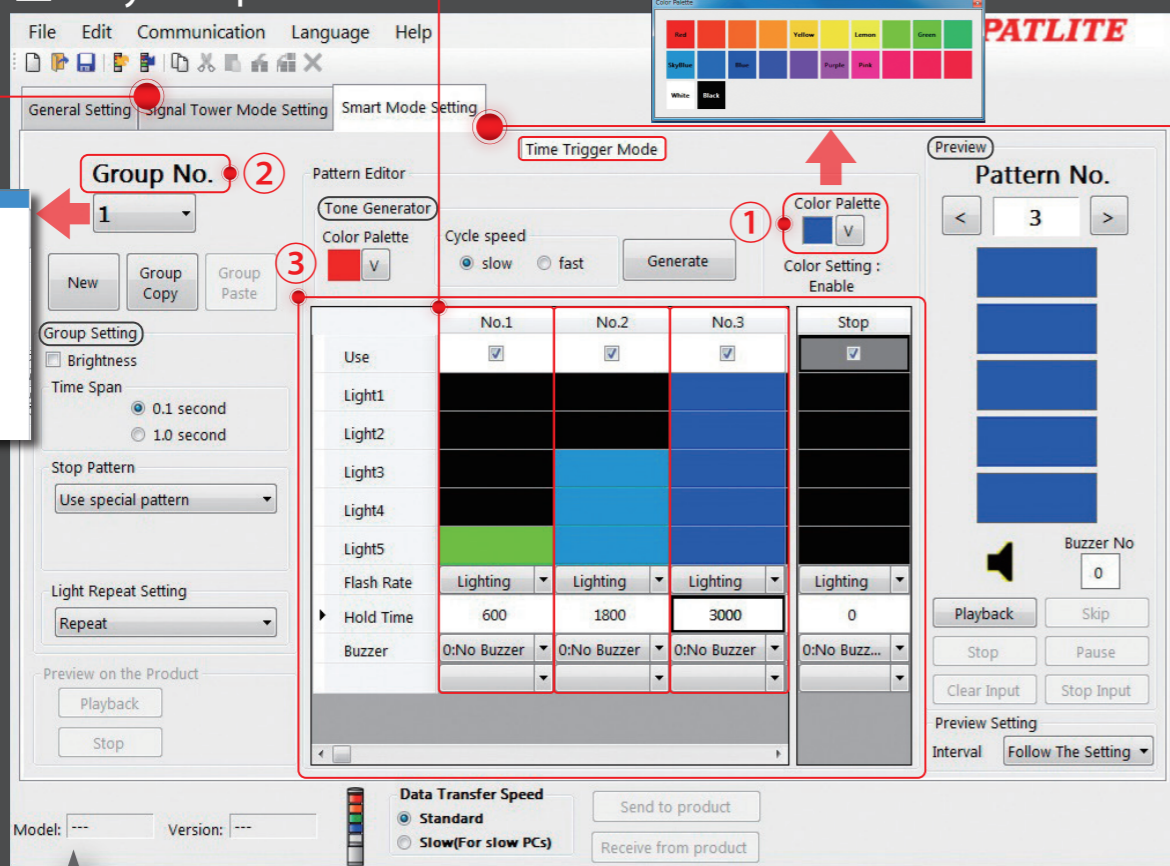


Editing Software
Free

Programming unnecessary! Setup is easy with PATLITE's exclusive editing software.

Easy Setup



* The screen above is only an image (conditions may vary with setup parameters).

① Color Setup (Maximum of 21)

A favorite color can be selected from a 21-color palette.

② Signal Tower Setup Features

With a maximum of 15 groups*, 63 series of operations can be registered to perform an operation setup as one group.

* A single display type can register a maximum of 31 groups.

③ Operations (Maximum of 63)

Operation setup is easy. Select the desired color (21 colors), flashing period (if any), and length of time the light and alarm are on* (maximum of 3,600 seconds, (11 sounds)). * Limited to Time Trigger and Pulse Trigger.

● Various Setups

- Group setup (Detailed Settings)
 - Flash Reduction Setup
 - Time Span (0.1 sec./1.0 sec.)
 - Repetitive Lighting Setup
- Sign pattern generation (9 colors)
 - Setup a gentle way to "shine like a firefly."
 - Color select: Cycle Speed (Low/High)
- Simulation
 - Check the light pattern by previewing it before transmitting data into the unit.
- System Transmit and Receive
 - Data can be written into the unit and also read from it, so that patterns can be easily copied into other units.

* Data transfer is also possible when the main unit is OFF and the system's power source is the USB bus power.

"Smart Mode" for use with various ideas

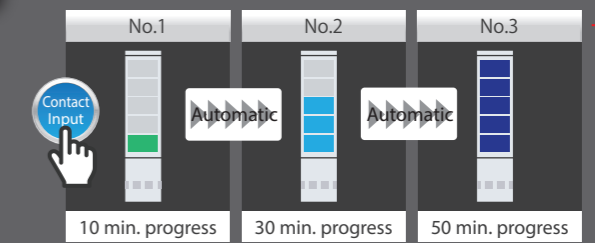
Elapsed Time / Countdown / Cycle Time

1. Time-trigger Type

Setups for "individual group" operation can be executed. Pattern change timing can be setup with the editing software.

Maximum pattern display	63 Patterns
Maximum group number	15 Groups

Setup timing in pattern changes with the editing software.



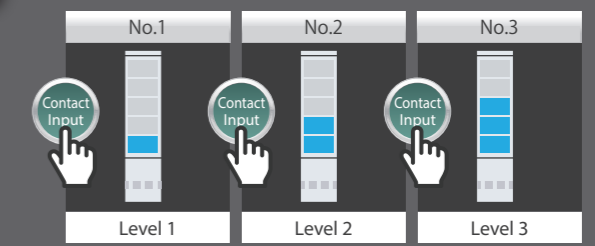
Determine thresholds for pressure/temperature, etc.

2. Pulse-trigger Type

Transitions from one pattern to another can be triggered by setting elapsed time or by individual discrete inputs.

Maximum pattern display	63 Patterns
Maximum group number	15 Groups

Pattern transition timing can be controlled by individual discrete inputs.



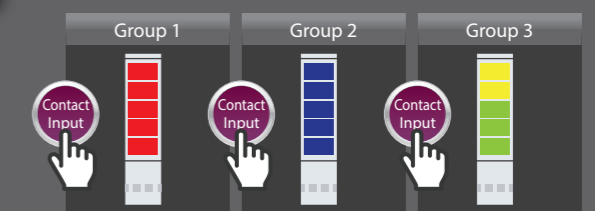
Error level/Request Priority/Status Display, etc.

3. Single-display Type

The product memory operates for "individual group" functions.

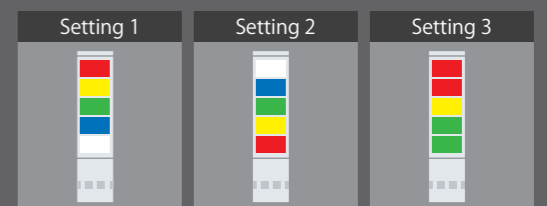
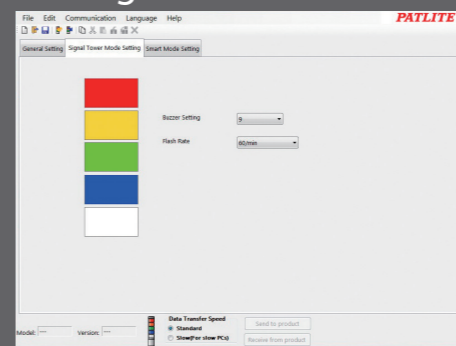
Maximum pattern display	—
Maximum group number	31 Groups

Inputs 1-5, with ON/OFF signal combinations, is made to operate.



"Signal Tower" mode is used like a conventional Signal Tower

Change the color of each tier easily with the editing software.



The color for each tier can easily be changed, even when used as a Signal Tower.

<http://www.patlite.com>

Patlite Search

Editing software and pre-set data patterns are downloadable for free from our website.